



2 February 2023

Area Manager
NSW State Emergency Service (SES)
Murray - Southern Zone Headquarters
206 Fernleigh Road, Wagga Wagga 2650
Email shz.admin@ses.nsw.gov.au

Dear Sir/Madam

RE: Notification of Activity – Wentworth Health Service Redevelopment – 24 Hospital Road, Wentworth

NSW Health Infrastructure (HI), is proposing to carry out demolition works and the erection of new buildings at Wentworth Health Service / Wentworth Hospital (Lot 1 of DP 1136392) in the comprehensive redevelopment of the hospital.

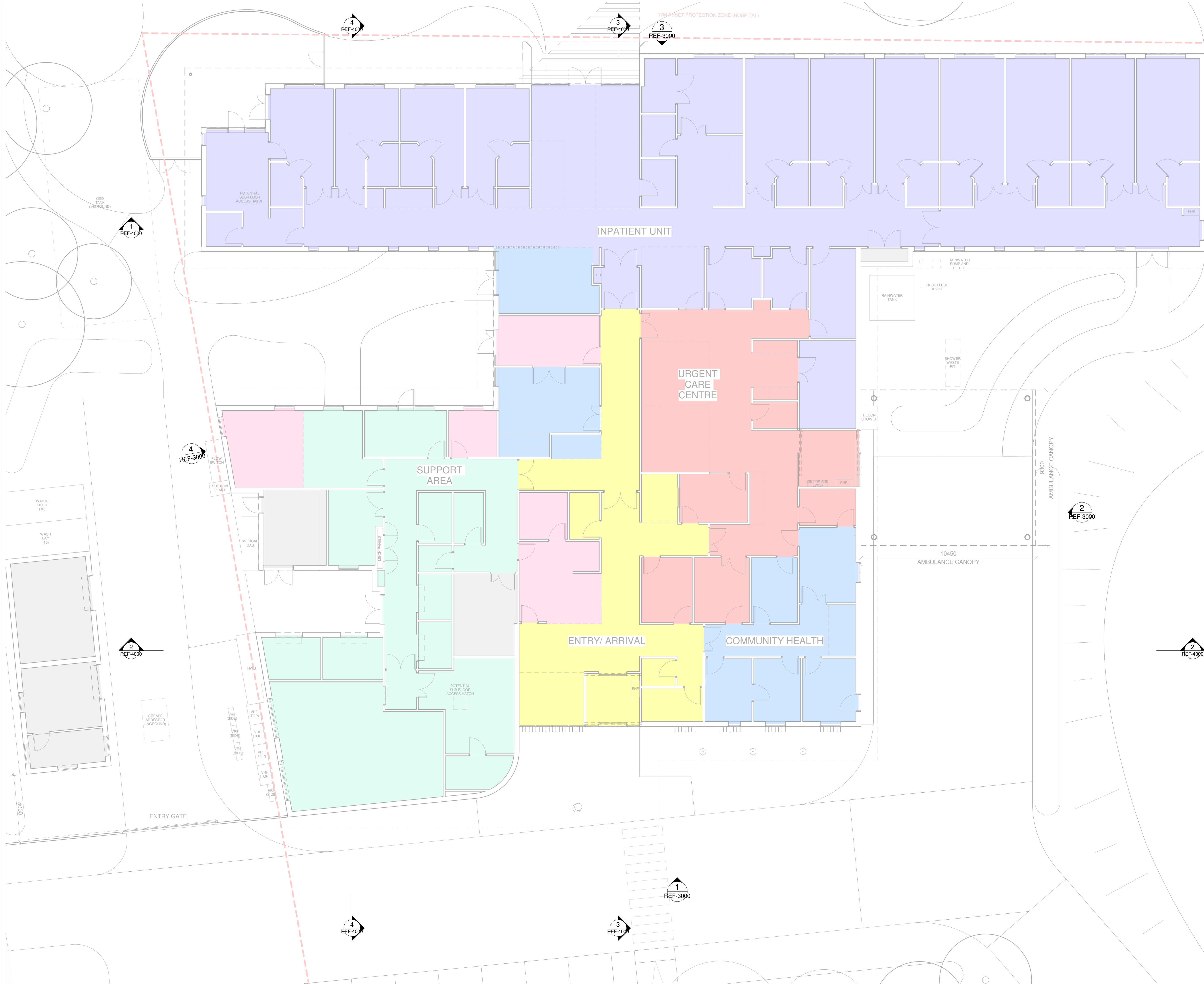
While this proposal does not require development consent from Council, we are required to assess its likely impacts in accordance with Part 5 of the *Environmental Planning and Assessment Act 1979*. In accordance with section 2.13(1) of the *State Environmental Planning Policy (Transport and Infrastructure) 2021*, we are notifying the SES of our intention to carry out the activity and ask that you provide any comments on the proposal within 21 days from the date of this letter. These comments will then be considered in our assessment of the proposal.

For your information, a notification plan set indicating the location and extent of the works is enclosed. Generally, the proposed activity comprises the staged redevelopment of the hospital site to provide for the comprehensive replacement of existing health services with a new single-storey building, including a 19-bed inpatient unit, associated outpatient and community health services, and urgent care centre. New staff accommodation is also proposed. The works further involve retaining the existing levee bank but building the site up to the levee bank's height, as well as demolition of the existing main hospital building, site remediation works, and landscaping.

If you wish to comment on the proposal, please provide your feedback to Benjamin Ferry at hi-info@health.nsw.gov.au or NSW Health Infrastructure, Attention Benjamin Ferry, Locked Bag, St Leonards, NSW 1590.

Yours sincerely

Benjamin Ferry
Senior Project Director
Rural and Regional
Health Infrastructure



MostynCopper
PROJECT MANAGER
MOSTYN COPPER

TTW Taylor
Thomson
Whitting
STRUCTURE + CIVIL
TTW

STEENSEN VARMING
ELECTRICAL + MECHANICAL
STEENSEN VARMING

Warren
Smith
Consulting Engineers

HYDRAULIC + FIRE
WARREN SMITH CONSULTING ENGINEERS

Issue				
No.	Date	Description	Dwn	Chkd
1	24.11.22	Ref Issue		
2	29.11.22	For Information		
3	15.12.22	Ref Issue	AK	PR
4	20.12.22	Ref Issue	AK	PR

+61 2 9922 2344
Nominated Architect:
Andrew Duffin NSW 5602
NBRS & Partners Pty Ltd VIC 51197
Project
WENTWORTH HSR

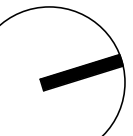
at
24 Hospital Rd
Wentworth NSW 2648
for
Health Infrastructure

Drawing Title
GENERAL ARRANGEMENT PLAN -
GROUND

Date 20/12/2022 3:33:29 PM
Scale 1 : 100 @ A1

Drawing Reference
21325-NBRS-AR-REF-1000

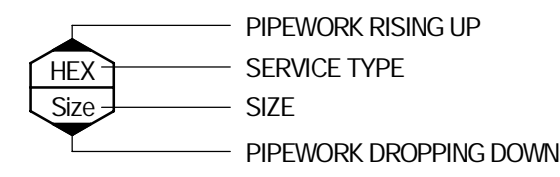
Any form of replication of this drawing in full or in part without the written permission of NBRS+PARTNERS Pty Ltd constitutes an infringement of the copyright.



Revision
4

SYMBOLS

PIPELINES



- STW STORMWATER DRAINAGE
- SS SUB-SOIL DRAINAGE
- SSRM SUB-SOIL RISING MAIN
- S SEWER DRAINAGE
- SRM SEWER RISING MAIN
- SST SEWER DRAINAGE STACK
- SCV SEWER CHAMBER VENT
- TW TRADE WASTE
- V VENT PIPE
- OF OVERFLOW
- NG NATURAL GAS
- PCWRM POTABLE COLD WATER RISING MAIN
- PCW POTABLE COLD WATER SERVICE
- PHW POTABLE HOT WATER SERVICE
- PHMF POTABLE HOT WATER FLOW
- PHMR POTABLE HOT WATER RETURN
- PWW POTABLE WARM WATER
- RCW RECYCLED COLD WATER

- EXISTING SERVICE
- EXISTING SERVICE TO BE REMOVED
- CONCRETE ENCASE PIPEWORK
- INSULATED PIPEWORK
- PIPE DROP TO OR RISE FROM
- PIPE TEE DROP
- PIPE TEE RISE
- ELECTRICAL WIRING IN CONDUIT
- VERTICAL PIPE RISER IN DRAINAGE
- FLOW DIRECTIONAL ARROWS ON ALL PIPING SERVICES
- PIPE FALL

VALVES (SCHEMATIC)

- BALL VALVE
- GATE VALVE
- STOP TAP
- DOUBLE CHECK VALVE IN WATER PIPELINES
- CHECK VALVE IN WATER PIPELINES
- REFLUX VALVE IN DRAINAGE PIPELINE
- PRESSURE REDUCTION VALVE
- PRESSURE LIMITING VALVE
- SWING CHECK VALVE WITH 3mm HOLE IN FLAP
- STAD VALVE
- SOLENOID VALVE
- MOTORIZED VALVE
- REDUCED PRESSURE ZONE DEVICE
- GAS REGULATOR

SYSTEM ACCESSORIES

- PUMP
- FILTER
- CLEAROUT
- FLANGED JOINT
- UNION
- PIPELINE TERMINATED WITH BLANK FLANGE
- PIPELINE CAPPED OFF
- 3-WAY VALVE
- STRAINER
- OVERFLOW GULLY
- WATER / GAS METER
- BOUNDARY TRAP

ABBREVIATIONS

- SEWER MANHOLE OR STORMWATER MANHOLE (CIRCULAR ACCESS CHAMBER)
- AUTHORITY MAIN (SCHEMATIC)
- STORMWATER PIT WITH COVER (BOLT DOWN)
- STORMWATER PIT WITH GRATE
- DOWN PIPE SPREADER
- NEW
- DRAINAGE CELL PLAN AREA
- DRAINAGE CELL VERTICAL INSTALLATION
- OVERLAND FLOW DIRECTIONAL ARROW

WATER PIPING SYSTEMS

- PCW POTABLE COLD WATER
- PCWRM POTABLE COLD WATER RISING MAIN
- D DRAIN
- PHW POTABLE HOT WATER
- R RELIEF
- PTOW POTABLE TANK COLD WATER
- PPCW PUMPED POTABLE COLD WATER
- PWW POTABLE WARM WATER

VALVES

- BV BALL VALVE
- CV CHECK VALVE
- DCV DOUBLE CHECK VALVE
- DCV DOUBLE DETECTOR CHECK VALVE
- GV GATE VALVE
- HT HOSE TAP
- NRV NON-RETURN VALVE
- PHT PLANTER HOSE TAP
- PLV PRESSURE LIMITING VALVE
- PRV PRESSURE REDUCTION VALVE
- RPZ REDUCED PRESSURE ZONE DEVICE
- RV REFLUX VALVE
- SV STOP VALVE

LEVELS

- AHD AUSTRALIAN HEIGHT DATUM
- CL CEILING LEVEL
- FFL FINISHED FLOOR LEVEL
- GL GROUND LEVEL
- HVL HIGH LEVEL
- IL INVERT LEVEL
- LL LOW LEVEL
- ML MID LEVEL
- RL REDUCED LEVEL
- USL UNDERSIDE
- USFL UNDERSIDE FLOOR
- TK TOP OF KERB

MATERIALS

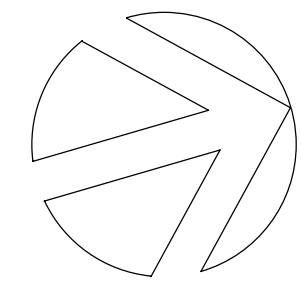
- BR BRASS
- CI CAST IRON
- CICL CAST IRON CEMENT LINED
- CONC CONCRETE
- CP CHROMIUM PLATED
- Cu COPPER
- DICL DUCTILE IRON CEMENT LINED
- FRC FIBRE REINFORCED CEMENT
- GMS GALVANISED MILD STEEL
- HDPE HIGH DENSITY POLYETHYLENE
- PE POLYETHYLENE
- PP POLYPROPYLENE
- RC REINFORCED CONCRETE
- RCP REINFORCED CONCRETE PIPE
- SS STAINLESS STEEL
- uPVC UNPLASTICISED POLYVINYL CHLORIDE

DO NOT SCALE FROM DRAWINGS. CHECK & VERIFY ALL DIMENSIONS & LEVELS BEFORE COMMENCEMENT OF ANY WORK.

THIS DRAWING IS REQUIRED TO BE PRINTED IN COLOUR. FAILURE TO DO SO MAY RESULT IN LOSS OF INFORMATION.

THIS DRAWING IS NOT TO BE COPIED IN PART OR WHOLE WITHOUT WRITTEN PERMISSION FROM WARREN SMITH CONSULTING ENGINEERS.

NORTH POINT



NOTES

REV	AMENDMENT	DATE
1	SCHEMATIC DESIGN	20/12/2022

HYDRAULIC SERVICES



WARREN SMITH CONSULTING ENGINEERS	
SINCE 1981.	
NSW 9/233 Castlereagh St, Sydney 2000 NSW Australia PH +61 (2) 9299 1312	VIC Suite 7.03, 365 Little Collins St Melbourne 3000 VIC Australia PH +61 (3) 8648 9942
wsp@warrensmith.com.au www.warrensmith.com.au	
ACN 002 197 088 ABN 36 300 430 126	
Hydraulic Fire Civil Utilities Infrastructure	

ARCHITECT



+61 2 9922 2344
Nominated Architect:
Andrew Duffin NSW 5602
NBRs & Partners Pty Ltd VIC 51197

nbrs.com.au
ABN 16 002 247 565

CLIENT



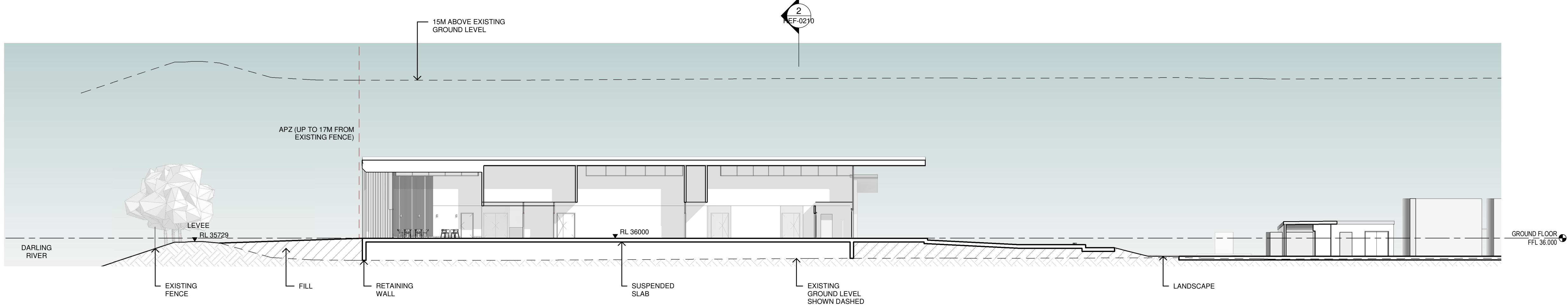
PROJECT

WENTWORTH HEALTH SERVICE
REDEVELOPMENT
24 Hospital Rd
Wentworth NSW 2648

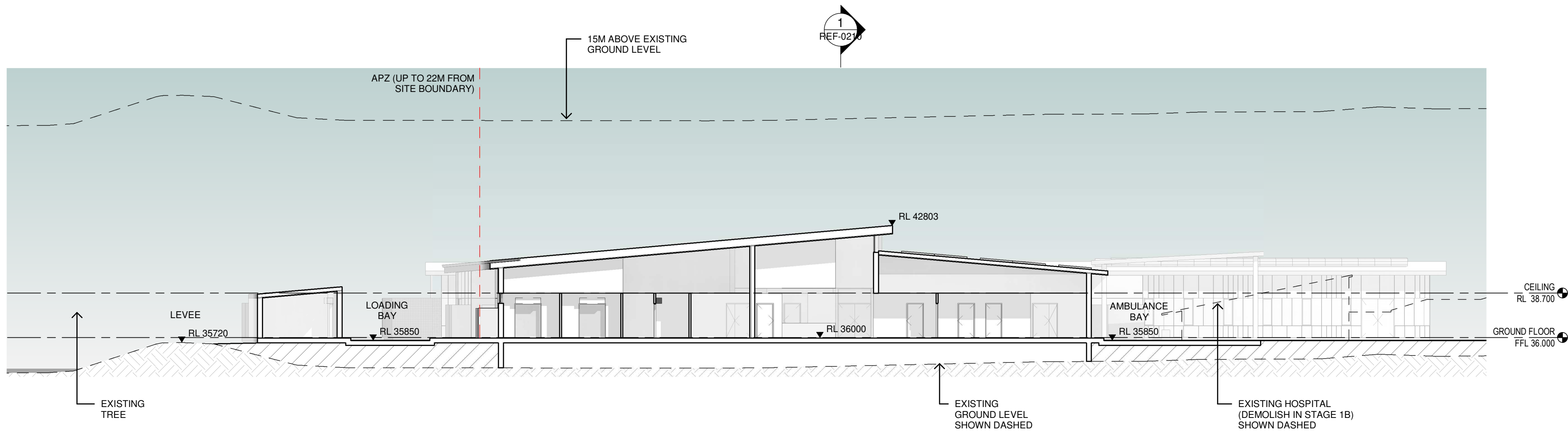
TITLE

SITE PLAN - HYDRAULIC SERVICES

SCALE	DRAWN	DESIGNED	CHECKED	APPROVED
As indicated	RB	VG	TW	TW
DATE	DRAWING No.	JOB No.		REV
20/12/2022	WSCE-HS-DD-0001	7517000		1



1 SITE SECTION - EAST-WEST
1 : 200



2 SITE SECTION - NORTH-SOUTH
1 : 200

MostynCopper
PROJECT MANAGER
MOSTYN COPPER

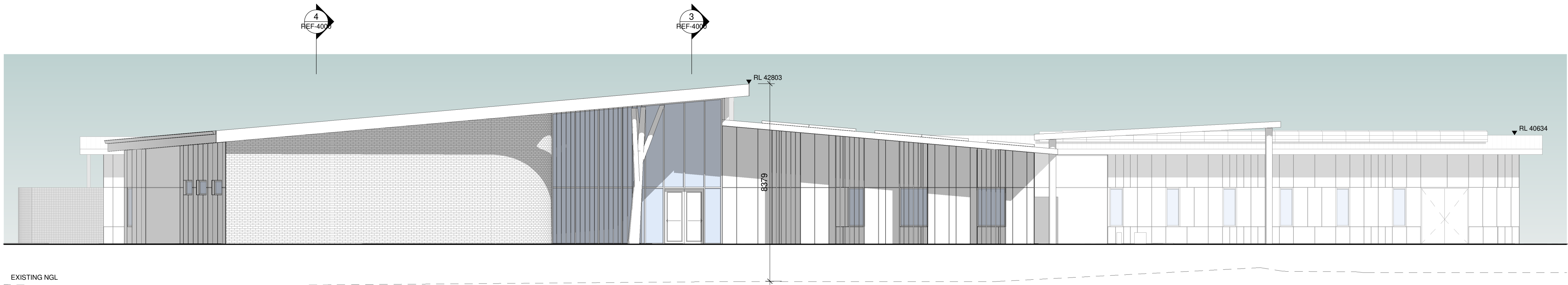
TTW Taylor
Thomson
Whitting
STRUCTURE + CIVIL
TTW

STEENSEN VARMING
ELECTRICAL + MECHANICAL
STEENSEN VARMING

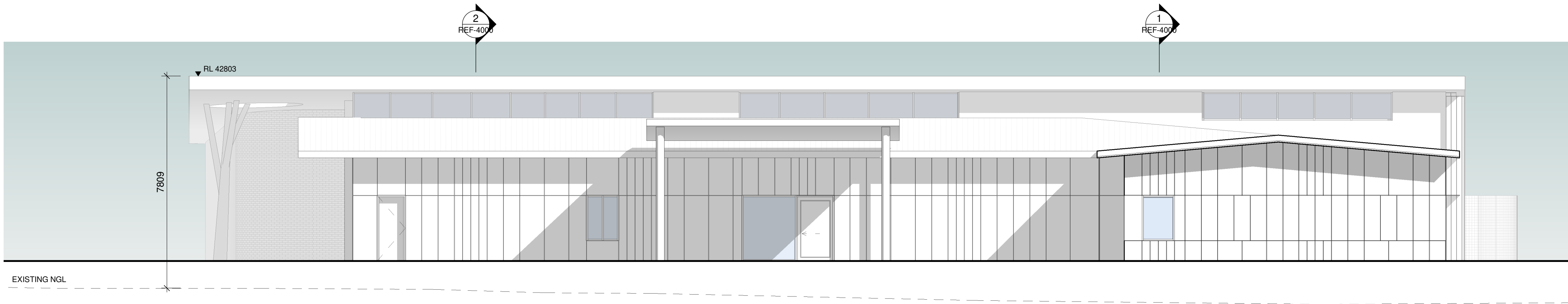
**Warren
Smith**
Consulting Engineers

HYDRAULIC + FIRE
WARREN SMITH CONSULTING ENGINEERS

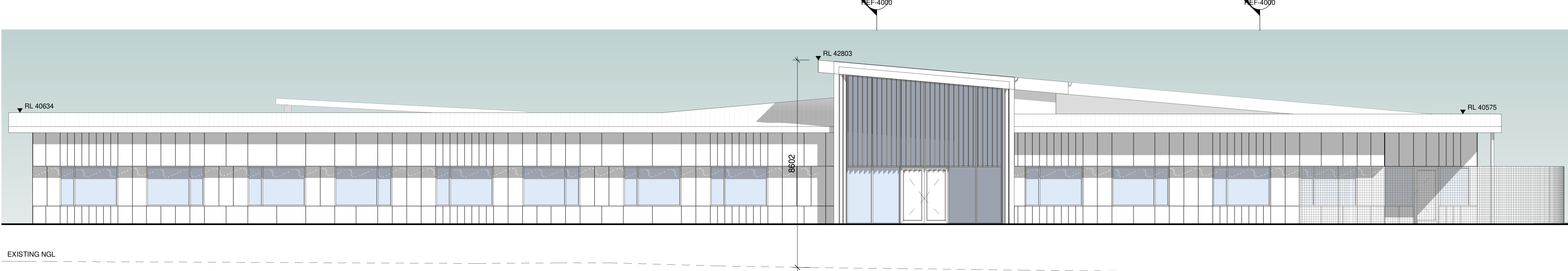
Issue				
No.	Date	Description	Dwn	Chkd
1	24.11.22	Ref Issue		
2	29.11.22	For Information		
3	15.12.22	Ref Issue	AK	PR
4	20.12.22	Ref Issue	AK	PR



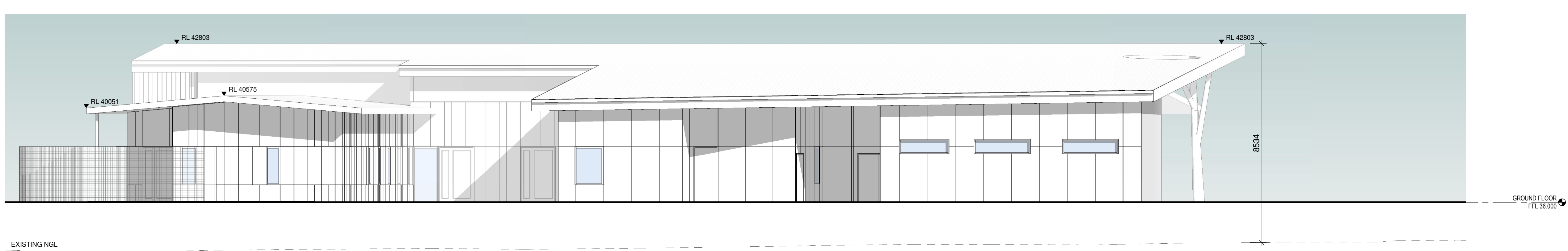
1 EXTERNAL ELEVATION - EAST
1 : 100



2 EXTERNAL ELEVATION - NORTH
1 : 100



3 EXTERNAL ELEVATION - WEST
1 : 100



4 EXTERNAL ELEVATION - SOUTH
1 : 100

Issue No.	Date	Description	Dwn	Chkd
1	24.11.22	Ref Issue		
2	29.11.22	For Information		
3	15.12.22	Ref Issue	AK	PR
4	20.12.22	Ref Issue	AK	PR